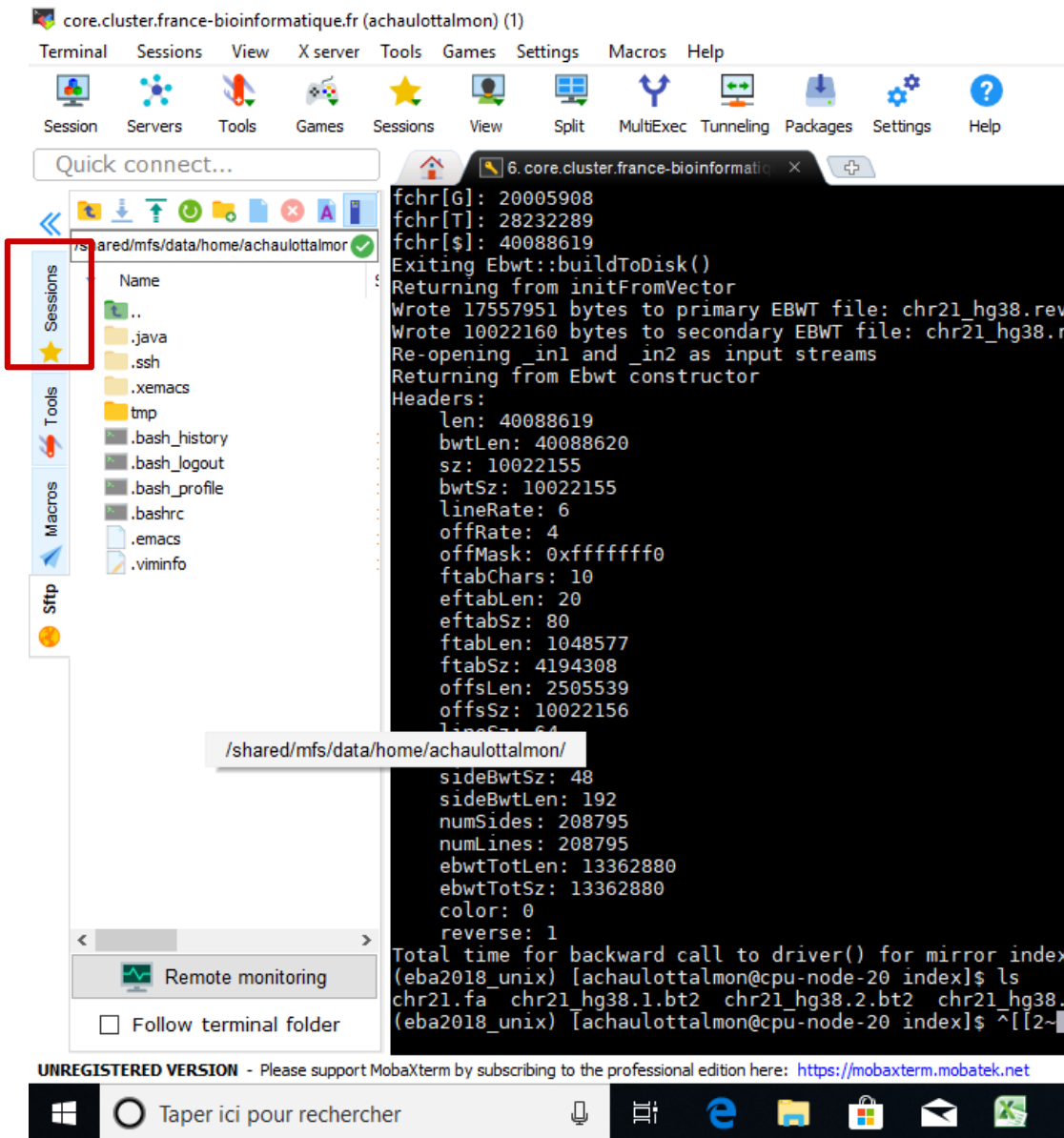


Comment ne plus avoir de problème de backspace pour MobaXterm



Click droit

core.cluster.france-bioinformatique.fr (achaulottalmon) (1)

Terminal Sessions View X server Tools Games Settings Macros Help

Session Servers Tools Games Sessions View Split MultiExec Tunneling Packages Settings Help

Quick connect...

sessions

core.cluster.france-bioinformatique.fr

core.cluster.france-bioinformatique.fr (achaulottalmon)

core.cluster.france-bioinformatique.fr (achaulottalmon)

core.cluster.france-bioinformatique.fr (achaulottalmon)

Terminal output:

```
fchr[G]: 20005908
fchr[T]: 28232289
fchr[S]: 40088619
Exiting EbwT::buildToDisk()
Returning from initFromVector
Wrote 17557951 bytes to primary EBWT file: chr21_hg38.rev.1.bt2
Wrote 10022160 bytes to secondary EBWT file: chr21_hg38.rev.2.bt2
Opening _in1 and _in2 as input streams
Returning from EbwT constructor
Parameters:
len: 40088619
powLen: 40088620
sz: 10022155
powSz: 10022155
lineRate: 6
offRate: 4
offMask: 0xffffffff0
ftabChars: 10
leftabLen: 20
leftabSz: 80
ftabLen: 1048577
ftabSz: 4194308
offsLen: 2505539
offsSz: 10022156
lineSz: 64
sideSz: 64
sideBwtSz: 48
sideBwtLen: 192
numSides: 208795
numLines: 208795
ebwtTotLen: 13362880
ebwtTotSz: 13362880
color: 0
reverse: 1
Total time for backward call to driver() for mirror index: 00:00:13
(eba2018_unix) [achaulottalmon@cpu-node-20 index]$ ls
chr21.fa chr21_hg38.1.bt2 chr21_hg38.2.bt2 chr21_hg38.3.bt2 chr21_hg38.rev.1.bt2 chr21_hg38.rev.2.bt2
(eba2018_unix) [achaulottalmon@cpu-node-20 index]$ ^[[2~
```

UNREGISTERED VERSION - Please support MobaXterm by subscribing to the professional edition here: <https://mobaxterm.mobatek.net>

Taper ici pour rechercher

core.cluster.france-bioinformatique.fr (achaulottalmon) (1)

Terminal Sessions View X server Tools Games Settings Macros Help

Session Servers Tools Games Sessions View Split MultiExec Tunneling Packages Settings Help

Quick connect...

sessions

core.cluster.france-bioinformatique.fr

core.cluster.france-bioinformatique.fr (achaulottalmon)

core.cluster.france-bioinformatique.fr (achaulottalmon)

core.cluster.france-bioinformatique.fr (achaulottalmon)

Session settings

SSH Telnet Rsh Xdmp RDP VNC FTP SFTP Serial File Shell Browser Mosh Aws S3 WSL

Basic SSH settings

Remote host * core.cluster.france-t Specify username achaulottalmon Port 22

Advanced SSH settings Terminal settings Network settings Bookmark settings

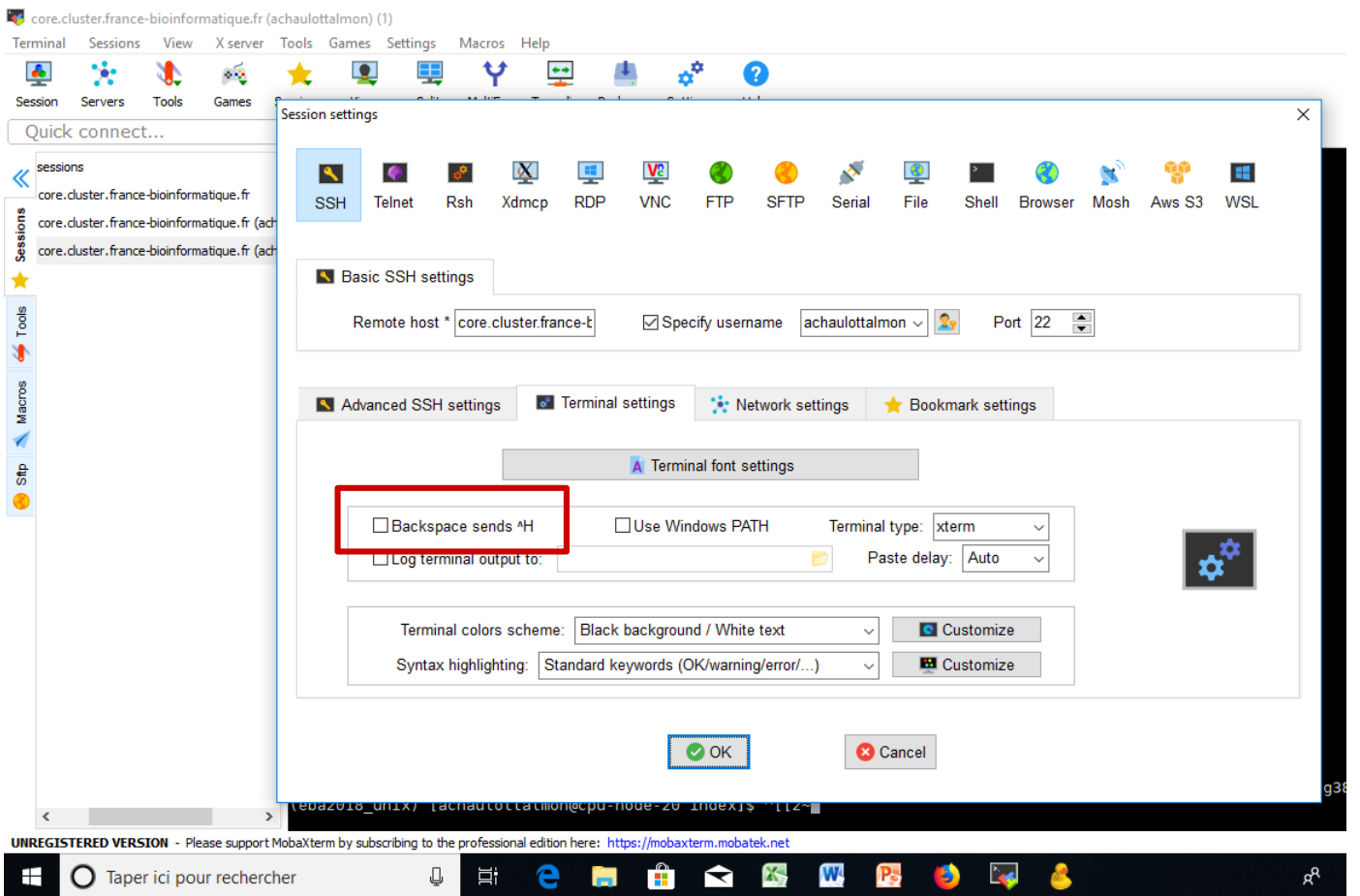
Secure Shell (SSH) session

OK Cancel

UNREGISTERED VERSION - Please support MobaXterm by subscribing to the professional edition here: <https://mobaxterm.mobatek.net>

Taper ici pour rechercher

16:49 25/11/2018



- « Backspace sends » doit être décoché
- Enregistrer
- Supprimer la session de moba active
- Renlancer la session de moba